

BOX OFFICE

Tel: 01777 702002
 Weekdays & Performance Evenings: 6.00 - 8.00pm
 (Saturday preceding play: 10.00am - 12 noon)
 (Please see individual play details for exact dates)

MEMBERS' POSTAL BOOKINGS

Please enclose SAE - or collect tickets on arrival on performance evening. Also, book by emailing boxoffice@rtl.org.uk (PLEASE INCLUDE MEMBERSHIP NUMBERS)

SEAT PRICES

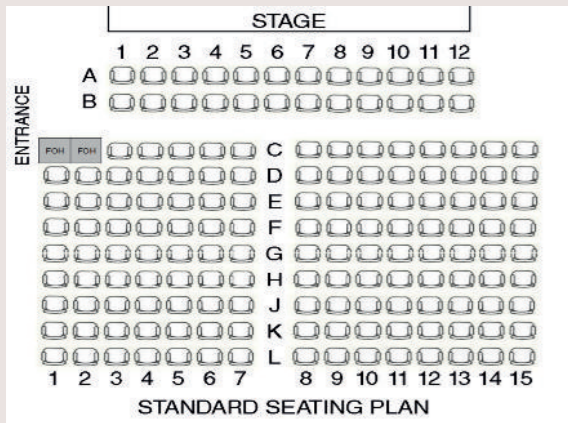
Adult Member	Nil
Under 25 Member	£2
Adult Non-Member	£12
Under 25 Non-Member	£6

Concessions (Monday Only)	
Senior Citizens	£11
Parties (10 or more Adult non members)	10% discount
Only one concession applies	

BOOK FOR THE SEASON

Members who always come on the same night to every play can apply to pre-book the whole season by contacting the Box Office. Your tickets will be waiting for you on arrival at each play.

Please note: Only a limited number of seats will be released for permanent bookings at each performance. There will be a one-off administration fee of £5 per Member.



2024 - 2025

OUR 84th YEAR



Wharf Road, Retford, Nottinghamshire, DN22 6EN



Tel: 01777 702002 (Box Office)
 Email: boxoffice@rtl.org.uk
www.rtl.org.uk



Members of the Executive Committee are always ready to discuss your comments and suggestions:

Cody McGinty (Chairman), Donnamarie Stamp (Vice Chairman), Donna Broadhead, David Cox, Keri Duffy, Maxine Goldstone, Lloyd Hawkins, Gaby Satchell, Stephen Walker and Joan Young.

Hon. Secretary: Gaby Satchell
 Hon. Treasurer: Stan Balmer

SPECIAL FACILITIES

There is wheelchair access to all public areas of the Theatre. Please notify the Box Office when booking. There is an induction loop system in the auditorium.

CAR PARKING

There is limited space on the Theatre forecourt. A public car park is situated on West Street behind 'The Ship Inn', and the Pay & Display car park opposite the Theatre is free after 6.00pm. (At the time of printing)

YOUTH THEATRE

We are very proud of our Youth Theatre's continuing success and of their tutor Victoria Evans. It is proving very popular with our students who range in age from 11-18 years and is currently oversubscribed with a waiting list. Members learn acting and performance skills as well as building confidence, teamwork and self-belief. Any young people wishing further information can contact Vicky by email. youth@rtl.org.uk

Visit our Award Winning Theatre



Keeping live theatre alive

RLT MEMBERSHIP

5 PLAYS FOR THE PRICE OF 4

Membership is open to all. The annual Membership subscription is £48 which includes tickets for all five plays of the season.

Please fill in a Membership Application Slip. (Cheques should be made payable to 'Retford Little Theatre'. Please enclose a stamped addressed envelope with postal applications).

Members are entitled to priority bookings, participation in all play readings and productions, and the right to attend general meetings.

UNDER 25s MEMBERSHIP

Under 25s membership is £5 for the whole season of five plays, plus £2 for each play ticket booked.

PATRONS

We invite Members to consider becoming Patrons of Retford Little Theatre. The total cost is £60 (which includes full Adult Membership and permanent booking administration fee) and is an additional way of supporting the work done by RLT.

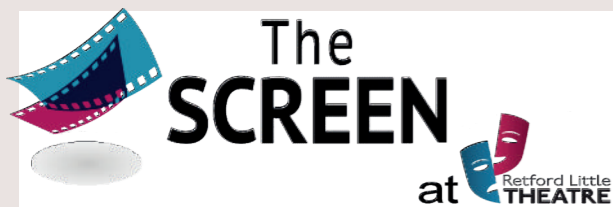
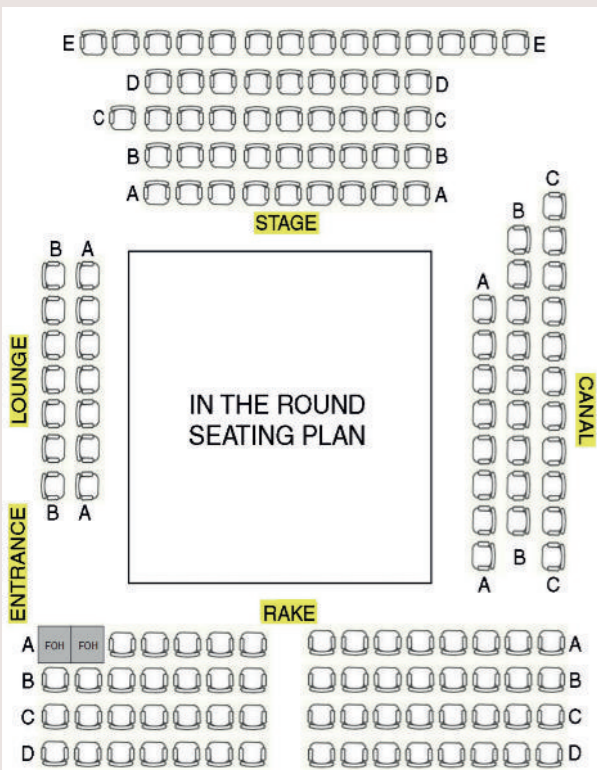
HOW TO GET INVOLVED

The key dates are always the Play Readings, and anybody is welcome to attend. At these informal evenings in the Theatre Lounge, the Producer welcomes everyone interested in being involved with the play in any way at all - not just taking a part, but backstage roles as well.

WE AT RLT ARE ALL VOLUNTEERS.

We are always looking for more helpers to staff the Theatre during Theatre events. If you would be willing to assist us with tea & coffee, behind the bar, Front of House or Box Office, please contact us: 01777 702002 or approach any member of staff.

If you have a technical ability and would be interested in operating sound and/or lights please call David Cox on 07837 664052 to discuss it.



Season 12 Films Remaining
 TheScreen@rlt.org.uk
 See a full season of 6 films for a membership of £20 or see any individual film for £5

Fri 4th October 2024 - 7.30pm About My Father (PG13)
 Starring Robert De Niro, Sebastian Maniscalco, Leslie Bibb.
 When Sebastian tells his father he is going to propose to his girlfriend, Salvo insists on crashing the weekend.

Fri 29th November 2024 - 7.30pm The Miracle Club (PG13)
 Starring Maggie Smith, Laura Linney, Kathy Bates
 There's just one dream for the women of Ballygar. To win a pilgrimage to Lourdes.

Fri 7th February 2025 - 7.30pm The Three Musketeers: Part II - Milady (12A)
 Starring François Civil, Vincent Cassel, Romain Duris.
 D'Artagnan, Athos, Porthos and Aramis have already joined the front, a secret from the past shatters old alliances.

Fri 4th April 2025 - 7.30pm A film of special merit

Sat 12th April 2025 - 2.00pm Matinée An EXTRA to the season not included in the membership fee.

PLEASE NOTE
 STARTING THIS SEASON OUR PLAYS WILL HAVE SIX PERFORMANCES AND WILL RUN FROM MONDAY TO SATURDAY

THIS WILL MEAN THE BOX OFFICE OPENING FOR MEMBERS' PRIORITY BOOKING WILL BE ON MONDAY AND TUESDAY PRECEDING PLAY WEEK

THIS WILL ALSO AFFECT YOUR CHOICE FOR PERMANENT SEAT BOOKING

SPECIAL EVENTS

JOINING EVENING
 Friday 6th September 2024 - 7pm onwards
 Free entertainment 8.15pm

CANDLELIT CAROL SERVICE
 At Hallcroft Methodist Church
 With readings by Retford Little Theatre members
 Sunday 22nd December 2024 - 6.00pm
 Followed by the legendary Beetledrive at RLT
 Everyone is very welcome

QUIZ NIGHT
 Quiz devised and presented by Judith & Stephen Walker
 Friday 10th January 2025 - 7.30pm

Make your New Year's resolution to get your brain buzzing with the return of this popular event!
 Pit your wits against the other teams to win **Cash Prizes**
 Comfortable lounge seating and bar open

MURDER MYSTERY EVENING
DEATH BY CHOCOLATE
 Organised by Stephanie Lee
 Saturday 19th April 2025 - 7.30pm

LIMITED TICKETS

ANNUAL GENERAL MEETING
 All members are welcome
 Friday 18th July 2025 - 7.30pm

SILVER LINING
 by Sandi Toksvig
 23rd - 28th Sept 2024 - 7.30pm

Sandi Toksvig's comedy features a varied group of women in a retirement home. As they chat about their life experiences, a storm rages outside and floods rise alarmingly. With no rescue in sight, the ladies realise that to survive this crisis they are going to have to do what, until recently, they've had to do all their lives: look after themselves. They need to create 'The Great Escape' - senior citizen style.

Produced by Cody McGinty



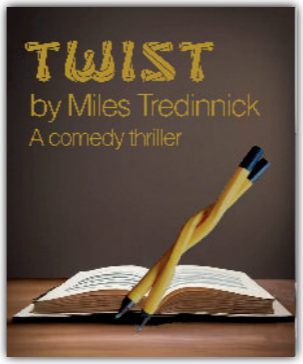
Members booking:
 Postal or email at anytime
 Box office: 16th & 17th Sept 2024

Public booking:
 Opens 18th Sept

TWIST
 by Miles Tredinnick
 18th - 23rd Nov 2024 - 7.30pm

David is a mild-mannered accountant who sees a way of making a fortune by writing a kiss-and-tell biography about his venomous wife, the nation's favourite actress from a hit TV soap. In this hilarious spoof of the popular theatrical genre, the thriller, nobody is what they seem and nothing is what it should be. Just when you think you know what's going to happen next - another "twist" catches you out.

Produced by Keri Duffy



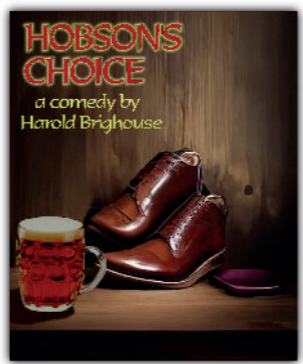
Members booking:
 Postal or email at anytime
 Box office: 11th & 12th Nov 2024

Public booking:
 Opens 13th Nov

HOBSON'S CHOICE
 by Harold Brighouse
 27th Jan - 1st Feb 2025 - 7.30pm

This ever-popular comedy features boot and shoemaker and overbearing father, Henry Hobson, whose elder daughter Maggie dares to stand up to him, and announces her intention of marrying Hobson's timid and downtrodden employee, Willie Mossop. Maggie and Willie make a success of their own shoe shop, and the tables are gradually turned until in the end Henry's drinking gets out of control, Willie saves the day and leaves his father-in-law, inevitably, with...Hobson's choice.

Produced by Richard Hinchliffe



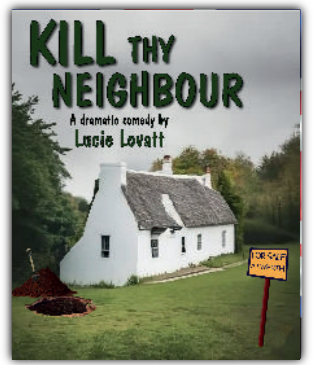
Members booking:
 Postal or email at anytime
 Box office: 20th & 21st Jan 2025

Public booking:
 Opens 22nd Jan

KILL THY NEIGHBOUR
 by Lucie Lovatt
 24th - 29th Mar 2025 - 7.30pm

Lucie, the playwright, spent her school years in Retford and her parents still live here. After a career as a creative producer in the West End, Lucie turned to writing. This is her first full-length play: it received 4- and 5-star reviews in all the major daily newspapers. Living in a picture-perfect village in Wales, Caryl wants to escape but her husband wants to stay. Does he feel he belongs or is there a secret he can't escape? Lucie's remarkable dark comedy is about love, marriage and feeling trapped in your own life.

Produced by Stephen Walker



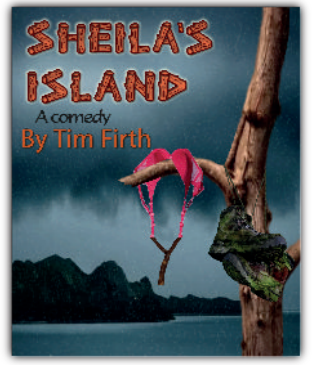
Members booking:
 Postal or email at anytime
 Box office: 17th & 18th March 2025

Public booking:
 Opens 19th March

SHEILA'S ISLAND
 by Tim Firth
 19th - 24th May 2025 - 7.30pm

Four out-of-condition, businesswomen set off on a team building exercise and succeed in becoming the first people ever to get shipwrecked on an island in the Lake District. Cut off from the world, this middle-class exercise turns into a carnival of recriminations, French cricket and sausages. What should have been a bonding process turns into a muddy, bloody fight for survival. Because when night settles in, strange things happen out in the wilds. And what took place on Sheila's Island that foggy November weekend none of this particular middle-management team would ever forget.

Produced by Donnamarie Stamp



Members booking:
 Postal or email at anytime
 Box office: 12th & 13th May 2024

Public booking:
 Opens 14th May

These amateur productions are presented by arrangement with Josef Weinberger Ltd. & Concord Theatricals Ltd, on behalf of Samuel French Ltd. www.concordtheatricals.co.uk.